
Yachts (Blue Lane)

Prior to Arrival

- Those who wish to enter Fiji must declare their interest directly with their **Fiji registered Yacht agent**, at least five working days prior to departure. The Fiji registered Yacht agent will then notify the Fijian Government through the Ministry of Commerce, Trade, Tourism and Transport, Ministry of Health and PS Office of the Prime Minister. Approval shall be granted on a case-by-case basis
- Once approval is granted Fiji registered Yacht agent will forward all documents to the FRCS and coordinate with other border agencies for clearance.
- Vessel will then be given approval to proceed to Enter Fiji.
- The passenger or crew member must produce a recent negative RT-PCR test (<48 hours before departure)
- The unwavering rule is that nobody engages with any person in the local Fiji community unless they have a negative test where they left from and have cleared a full 14 days of uninterrupted sailing that does not include contact with any other boat. Additional time spent in the quarantine zone will depend on how long one has been at sea.
- Vessels that are given approval to arrive in Fijian waters will be subject to the following:

On Arrival

- Sailing days to be considered as part of quarantine sailing period. The route will be verified through the Automatic Identification System
 - If there are 14 days of uninterrupted sailing verified by the Automatic Identification System, the passengers and crew will undergo symptom and temperature checks and a swab test may be required on arrival.
 - Upon arrival of the vessel, procedures for border agencies will remain the same, but will only proceed once MOH has given its clearance.
 - The passengers and crew must go into mandatory isolation at a Government-designated isolation facility and take a swab test if they display symptoms. The MHMS protocol for dealing with suspected cases will be applied. If the test is positive, he or she must remain in isolation under the care of MHMS but if the test is negative he or she will be released
 - MOHMS/IMT will consider and determine advice on who will need to be tested or retested at the end of the quarantine period.
 - If the passengers and crew display no symptoms, the yacht may be permitted to visit other ports within Fiji
 - If there are less than 14 days of uninterrupted sailing, the yacht will be quarantined at a safe harbour in Fiji under surveillance by the Republic of Fiji Military Forces (RFMF) and Navy for the period of remaining days. The period of remaining days will be calculated by subtracting the number of
-

uninterrupted sailing days from 14 days. Uninterrupted sailing days are days where the yacht has not been embarked by other persons or where the persons on board have not disembarked. For example, a yacht sailing seven uninterrupted days would only be required to quarantine for seven days in Fiji, followed by symptom and temperature checks and a swab test maybe required

- During the period in which the yacht is quarantined in a safe harbor the MHMS will monitor the yacht and its crew. In the event the MHMS is unable to devote resources to monitoring yachts, private medical practitioners can be accredited by MHMS to undertake this, subject to conditions which may be set by MHMS
- Vessels must clear immigration at Port Denarau Marina and must receive clearance for any subsequent visit or disembarkation at any site or island in Fiji by obtaining their cruising permit and coastal clearances. Further roll out could be considered and planned after this initial pilot.
- Passengers and crew must fill out the mandatory supplementary Health Arrival Card and travel history documentation at the port of entry upon arrival
- All passengers and crew must download the careFIJI app at the port of departure, for both arrivals to and departures from Fiji. [www.carefiji.digitalfiji.gov.fj]
- In the case of refuel and supply of provisions, vessel representative can pick up provision under strict guidelines from the quarantine dock. Fueling of vessel would be at dock under supervision of the quarantine officer, without any contact with personnel
- **The costs of COVID-19 tests and any isolation or quarantine related costs, including berthing, accommodation or meals will be borne by the yacht owner.**
- Mandatory for all passengers and crew to download careFIJI app. Where passengers and crew does not have a smart phone, the traveller must provide alternate contact details for contact tracing purp

Fiji registered Yacht Agent Procedures

All vessels intending to apply for entry into Fiji will have to engage the services of a registered Fiji registered Yacht Agent at least 5 working days prior to departure .

The Fiji registered Yacht Agent on behalf of the vessel will ensure all their documentations are in order and forward the application for entry (C2C) together with supporting documents to MCTTT, Ministry of Health and PS OPM for approval.

Ministry of Health will provide approval on a case by case basis for Authority to Enter Fiji.

Once a written approval is given, all crew on board the vessel will have to confirm negative RT-PCR test prior to departure (<48hrs). A copy of this test report has to be submitted to the agent as part of the application.

Border Agency Procedures

All yachts and small crafts arriving into Fiji from overseas must first report to Port Denarau Marina as Port of Entry.

The marina will advise the vessel to proceed to dock or remain on anchor after confirmation from Ministry of Health.

While at quarantine, the RFMF Naval division will monitor movement of vessels and people. All movement is strictly prohibited during quarantine.

Once clearance is received from Ministry of Health, the vessel will be allowed to proceed to dock by the Agent.

The Agent will contact Customs Health and, Biosecurity, Immigration for Clearance upon arrival on dock.

You will be met with officials from Port Health, Customs, and Biosecurity and Immigration Quarantine Division on arrival and must remain on board until the yacht has been cleared.

A COVID test may be required during this time. All costs to be borne by the vessel.

All garbage **MUST BE INCINCERATED** by responsible Agency, Biosecurity. Costs borne by the vessel.

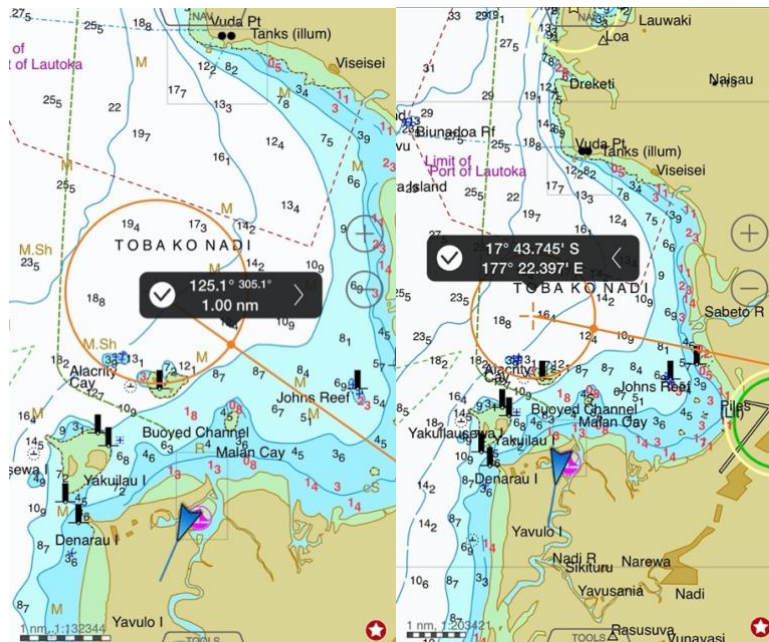
The following documents must be submitted prior to departure and the same presented on arrival:

- Completed “Inward report ” (including 2 copies of crew and passengers lists)
- Completed “Passenger arrival card”
- Valid passport(s)
- Health Arrival Card and travel history documentation
- Clearance from last port

Any breach in this procedure will result in the violation of the Public Health Act which attracts a maximum fine of \$5000 or 10 years imprisonment or both.

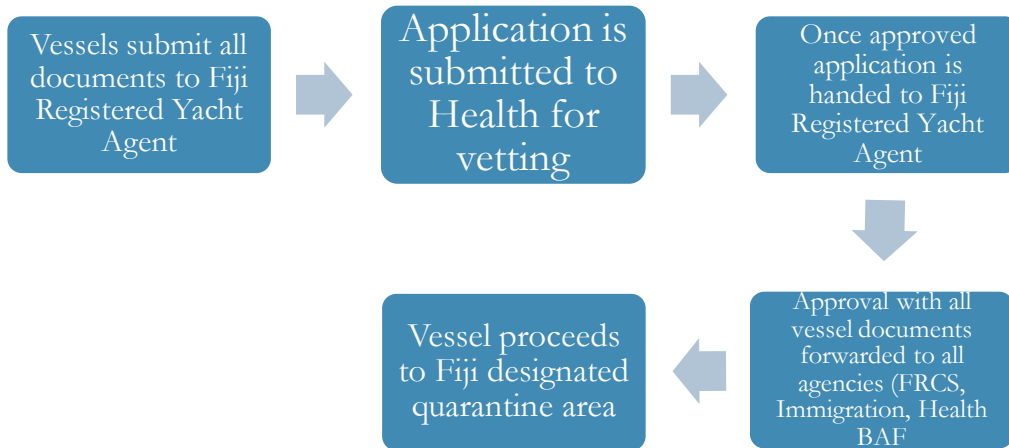
Approval processes information requested:

- Quarantine surge capacity - Coordinates [1 nm of 17 43.754' S 177 22.397' E] to be approved by Ministry of Transport – MSAF



-
- Contact details for approval process to be forwarded by Fiji Yachting Agents to Office of the Prime Minister with Health and MCTTT copied.
 - Timeframe for approval process

Process



This document is a live document and may change from time to time, as and when required.